

Scriptsheets Excel Add-In

The **Scriptsheets Add-in** is a VBA Excel Add-in designed for use with Microsoft Excel.

The purpose of this Add-in is to write programmable AutoCAD Command Scripts that provide the following features:

- Combines spreadsheets calculations with AutoCAD commands.
- Implements conditional execution and program flow to script files.
- Useable with all versions of AutoCAD (including LT).
- Leaves AutoCAD setup unaltered.

Files Included with the download

The download containing this document also includes the following files:

Description	File name
The Scriptsheets VBA Excel Add-in	Scriptsheets.xlam
Image for AutoCAD toolbar button	RCDATA_SCRIPTRUN.png
Sample AutoCAD R14 drawing	Sample.dwg
Sample Excel workbook	Sample.xlsx

Important Notice of Use and Distribution

The CAD Factory provides this program without warranty either expressed or implied. Read the disclaimer below for more information.

NOTICE OF COPYRIGHT

The Add-In software, including any accompanying documentation (the "Software"), are provided to you at no charge. The CAD Factory owns all rights, title, and interest in and to the Software. The user assumes the entire risk as to the accuracy and the use of the Software.

COPYRIGHT NOTICE. Copyright © 2019 The CAD Factory, Eerste tuinsingel 37 3112 ER SCHIEDAM Netherlands. All rights reserved.

DISCLAIMER OF WARRANTY

NO WARRANTY. THE SOFTWARE IS PROVIDED "AS-IS," WITHOUT WARRANTY OF ANY KIND, AND ANY USE OF THIS SOFTWARE PRODUCT IS AT YOUR OWN RISK. TO THE MAXIMUM EXTENT PERMITTED BY APPLICABLE LAW, THE CAD FACTORY DISCLAIMS ALL WARRANTIES AND CONDITIONS, EITHER EXPRESS OR IMPLIED, INCLUDING BUT NOT LIMITED TO THE IMPLIED WARRANTIES AND CONDITIONS OF MERCHANTABILITY AND/OR FITNESS FOR A PARTICULAR PURPOSE, TITLE, AND NON-INFRINGEMENT, WITH REGARD TO THE SOFTWARE.

LIMITATION OF LIABILITY. TO THE MAXIMUM EXTENT PERMITTED BY APPLICABLE LAW, IN NO EVENT SHALL THE CAD FACTORY BE LIABLE FOR ANY SPECIAL, INCIDENTAL, INDIRECT, OR CONSEQUENTIAL DAMAGES WHATSOEVER (INCLUDING, WITHOUT LIMITATION, DAMAGES FOR LOSS OF BUSINESS PROFITS, BUSINESS INTERRUPTION, LOSS OF BUSINESS INFORMATION, OR ANY OTHER PECUNIARY LOSS) ARISING OUT OF THE USE OF OR INABILITY TO USE THE SOFTWARE, EVEN IF THE CAD FACTORY HAS BEEN ADVISED OF THE POSSIBILITY OF SUCH DAMAGES. BECAUSE SOME STATES AND JURISDICTIONS DO NOT ALLOW THE EXCLUSION OR LIMITATION OF LIABILITY FOR CONSEQUENTIAL OR INCIDENTAL DAMAGES, THE ABOVE LIMITATION MAY NOT APPLY. THE CAD FACTORY'S ENTIRE LIABILITY AND YOUR EXCLUSIVE REMEDY UNDER THIS EULA SHALL NOT EXCEED FIVE DOLLARS (US\$5.00).

RESTRICTIONS

The following conditions also apply to your use of the Software:

The Software may be copied and distributed internally only, subject to the following conditions:

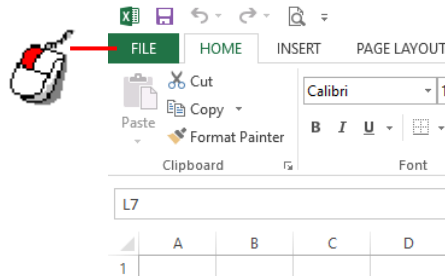
- All text must be copied without modification and all pages must be included;
- If software is included, all files must be copied without modification;
- All components of this Software must be distributed together; and
- This Software may not be distributed for sale or profit.

1 Install Scriptsheets.xlam

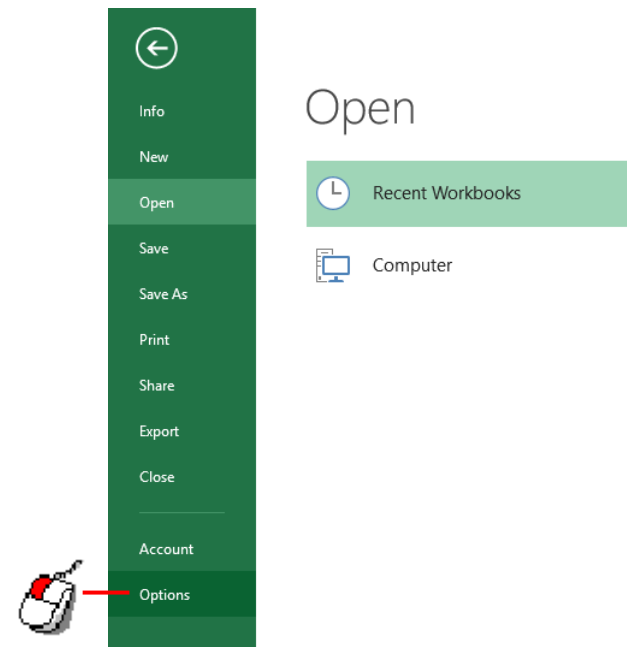


XLAM files are Excel Add-Ins and provide optional commands for Microsoft Excel. By default, add-ins are not immediately available in Excel, so you must first install and activate add-in.

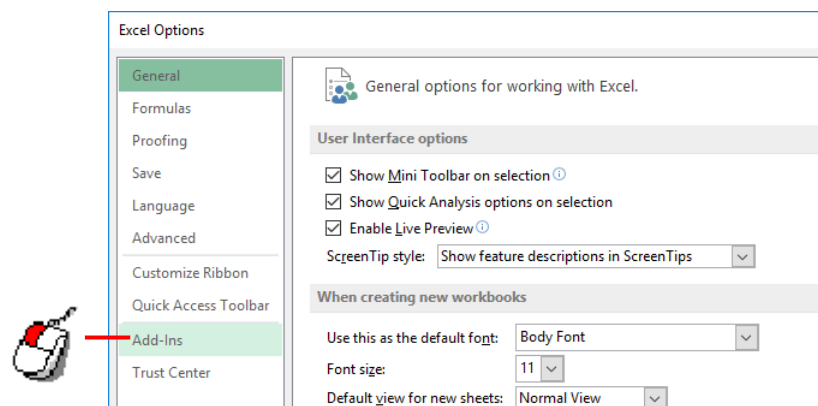
- Open Excel and click File



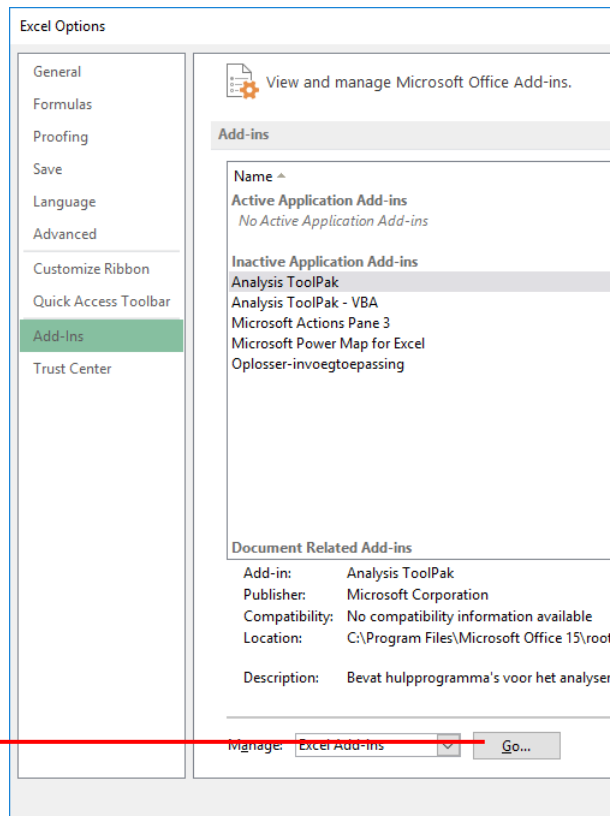
- Click Options



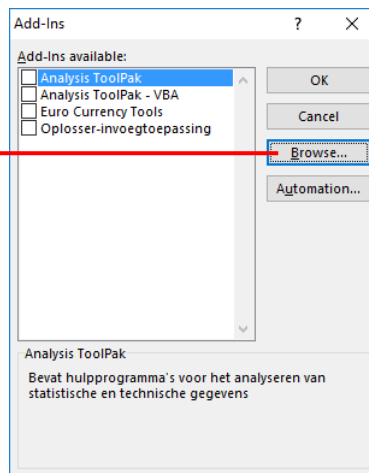
- Click Add-Ins



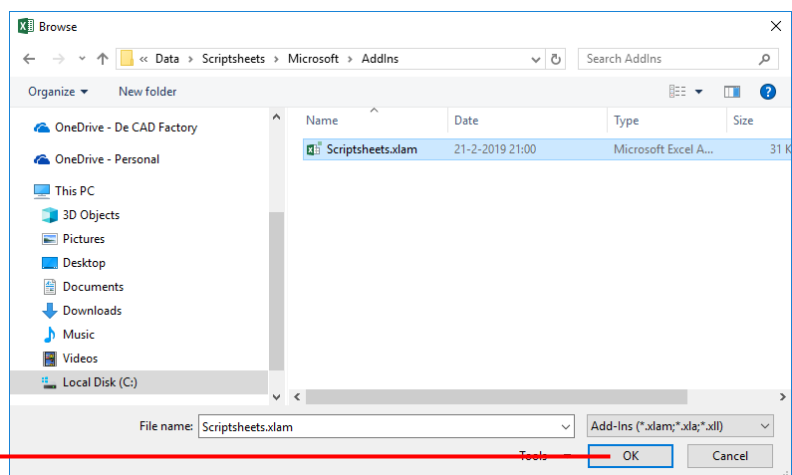
- **Manage: Excel Add-ins and click Go...**



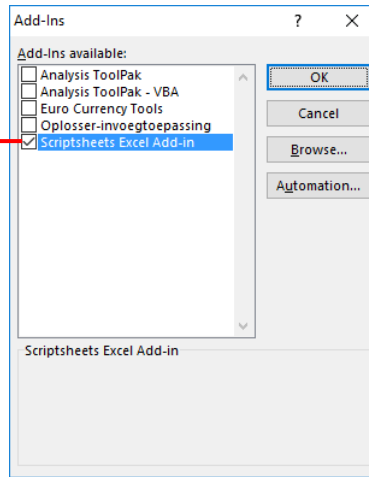
- **Click Browse...**



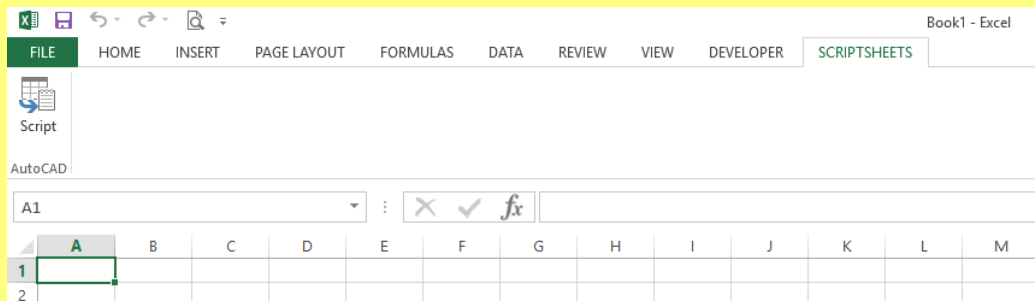
- **Browse to Scriptsheets.xlam and click OK**



- **Activate Add-in with Checkbox and close dialog with OK button**

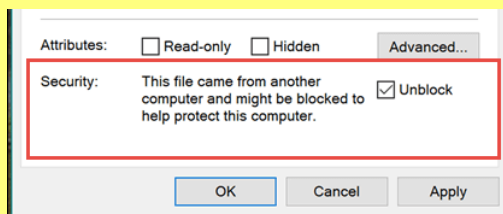


At this point you should see the SCRIPTSHEETS ribbon tab and the AutoCAD Script button.



Caution! Microsoft released an update in July 2016 to block Office files and add-ins downloaded from the internet from loading automatically. Thus, you may not be able to view the ribbon user interface of the add-in after installing it. The feature is called **Protected View** and you may need to first unblock the add-in file.

- [1] Right-click the Scriptsheets.xlam file and click **Properties**
- [2] Mark the **Unblock** checkbox near the bottom of the form and click OK



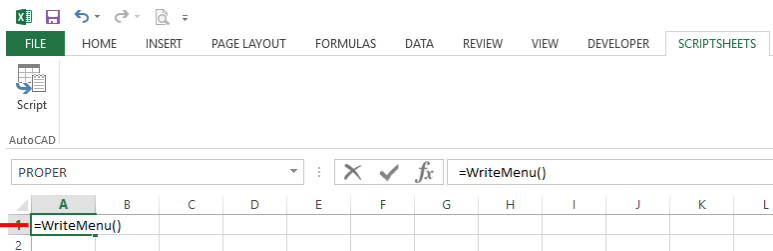
2 Create and load Script.mnu



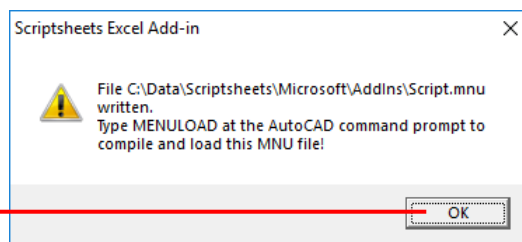
.MNU files allows you to add user interface element like a toolbar without changing the customization in the main AutoCAD menu file.

Script.mnu is the partial menu that contains the AutoCAD toolbar with a single button to execute the command script that is written by the scriptsheets Add-in.

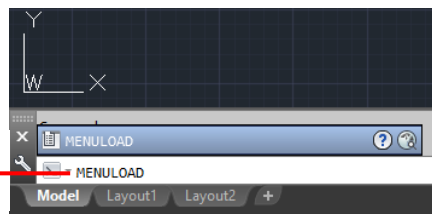
- In cell A1 type **=WriteMenu()** followed by Enter



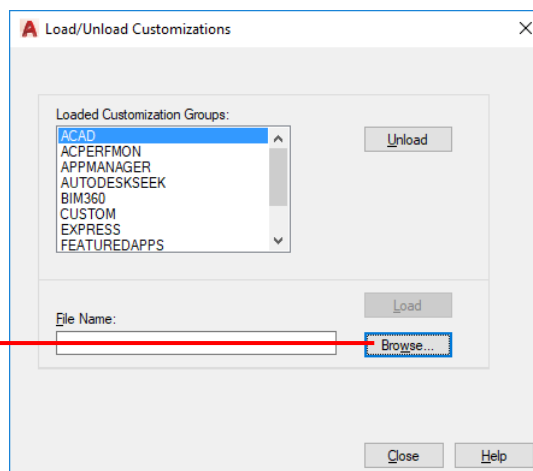
- The Message box shows where the MNU file is saved. Click OK and close Excel



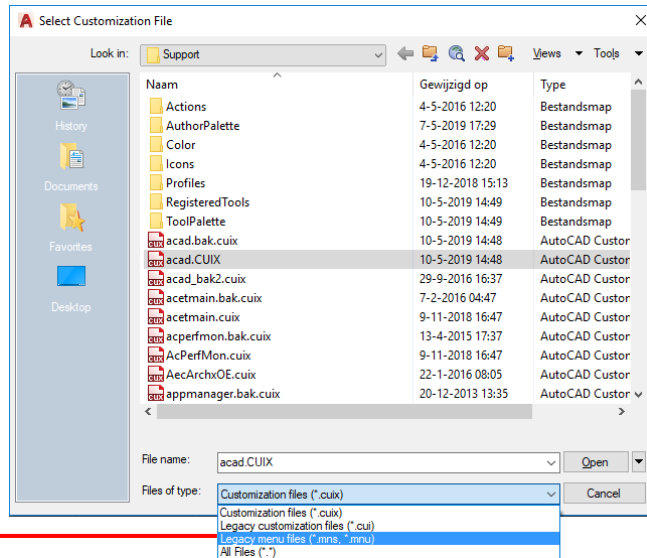
- Start AutoCAD and type **MENULOAD** followed by Enter



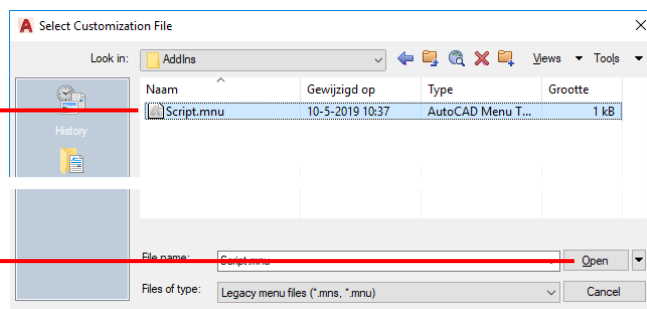
- Click Browse...



- Choose Legacy menu files



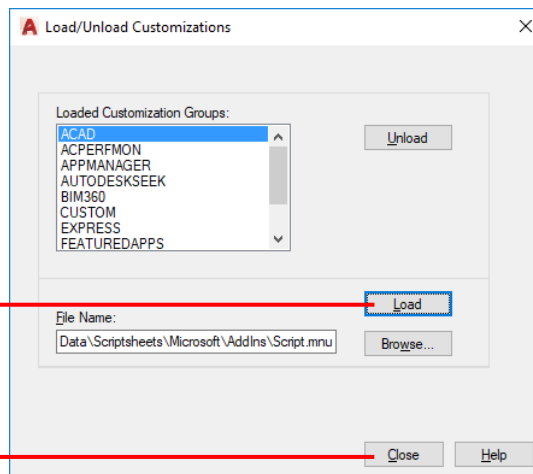
- Browse to Script.mnu and click the file



- Click Open



- Click Load



- Click Close



- Dock the toolbar

